

Machine Shop & Sample Prep - Composites

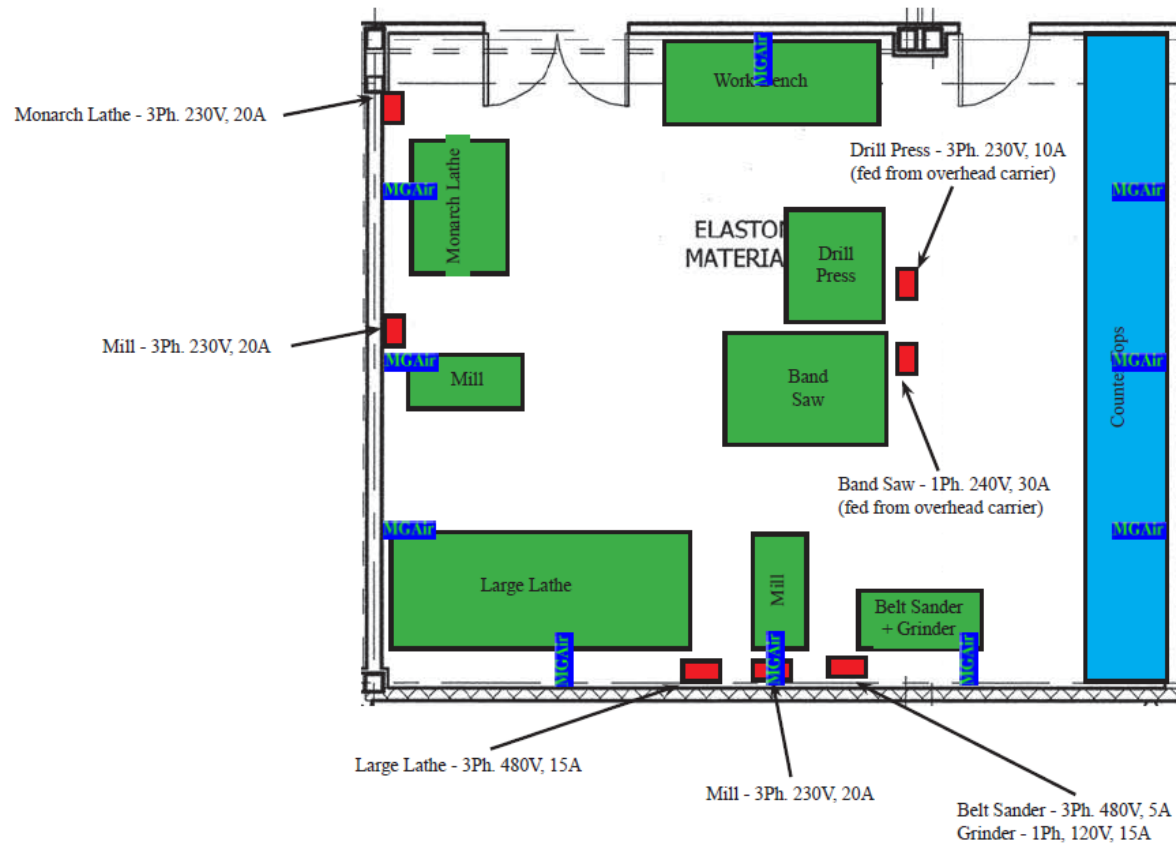
Equipment layout compiled
on drawing Q201.2

Notes:

Electrical conduit, wiring, and cut-off switches for each machine tool will be installed by EG&G after building construction is complete.

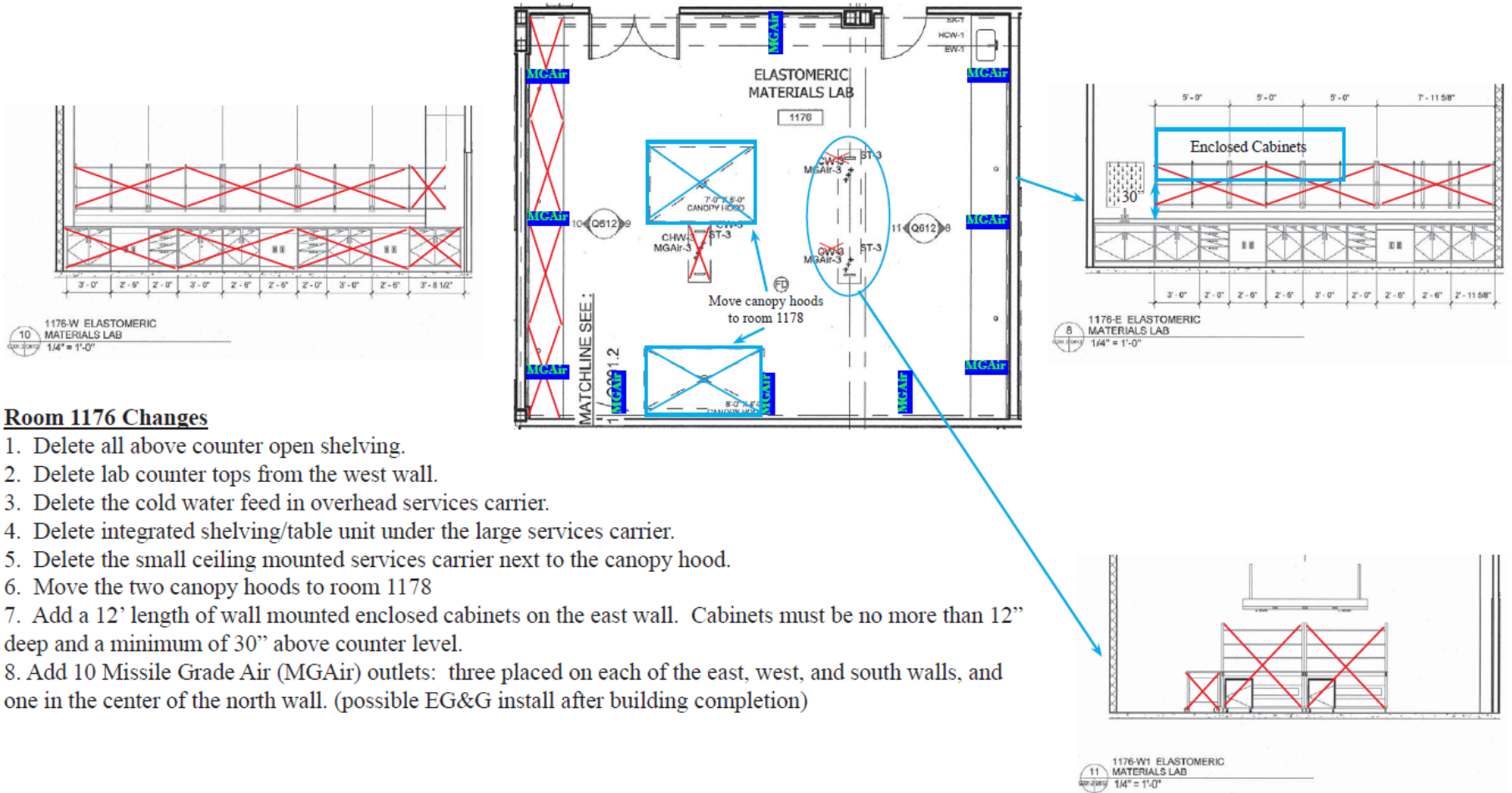
Special sample dust collection vacuum system will be installed by EG&G after equipment installation has fixed the exact location for the suction tubing.

HEPA filtration of air in the room will have to be researched to determine the best system to install. There should be sufficient air flow supplied by the building HVAC such that only passive filters on the return air side should be necessary.



Machine Shop & Sample Prep - Composites

Laboratory furniture layouts
compiled from drawings Q201.2 and Q612



Room 1176 Changes

1. Delete all above counter open shelving.
2. Delete lab counter tops from the west wall.
3. Delete the cold water feed in overhead services carrier.
4. Delete integrated shelving/table unit under the large services carrier.
5. Delete the small ceiling mounted services carrier next to the canopy hood.
6. Move the two canopy hoods to room 1178
7. Add a 12' length of wall mounted enclosed cabinets on the east wall. Cabinets must be no more than 12" deep and a minimum of 30" above counter level.
8. Add 10 Missile Grade Air (MGair) outlets: three placed on each of the east, west, and south walls, and one in the center of the north wall. (possible EG&G install after building completion)